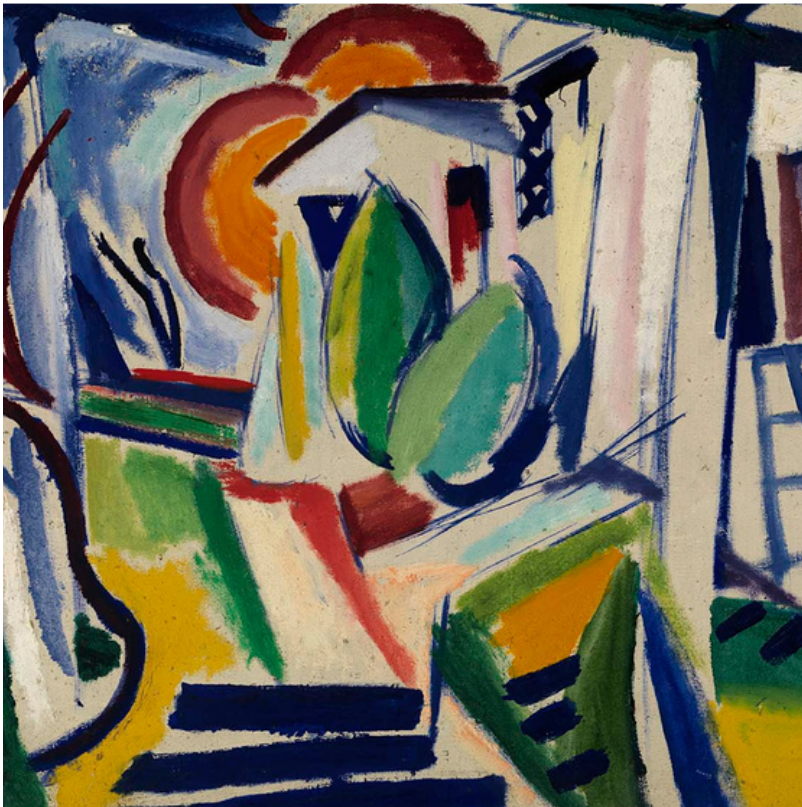


Fugue in Blue *for Clarinet Quartet*

COMPOSED BY HUGH LEVEY



CLARINET QUARTET

SCORE & PARTS

Fugue in Blue

HUGH LEVEY

Fugue in Blue started out as a Clarinet Trio called Jazz Fughetta, indicating that it was a simple fugue in a jazz style, but without the formality of a fully worked out fugue. In this rewritten Clarinet Quartet version, the first three voices enter fugally with the second beginning on the dominant and the third back in the tonic. After a contrapuntal interlude based on the opening rhythms, the fourth voice enters on the sub-dominant.

The original work was a student composition exercise, combining a conventional classical form (fugue) with a syncopated jazz style. Many years later it has been reworked in swing style with a more laid back feel and some more inventive harmony and jazz articulation. Of course, it has also had a fourth part added to create the clarinet quartet that is published here.

The work is well suited to recital programmes, as a light-hearted opener or relaxed interlude in a more serious concert. It is also suited to younger players who wish to combine the discipline of 'classical' chamber music while learning about jazz articulation, such as falls and short notes at the ends of phrases.

Duration: 1' 33"

PERFORMANCE NOTES

The composer has used precise articulation to create the lightness and cool vibe of a jazz piece while adhering to a standard classical form, so it should be played and articulated accurately. The dynamic markings will help to ensure that the most important musical material projects through the texture, but players should also use their musicianship to listen attentively and judge for themselves.

Although the work is fully composed and written out, the first clarinet may improvise a solo between bars 27 and 33 (chords provided) if they prefer, rather than play the written material. This would be very much in keeping with the jazz idiom.

Cover images: (1) Fugue (extract), 1918, by Henry Lyman Sayen, Public domain, via Wikimedia Commons (2) Clarinet, Yamaha Corporation, CC BY-SA 4.0, via Wikimedia Commons

Fugue in Blue

Hugh Levey

Swing ♩ = 122

Bb Clarinet 1

Bb Clarinet 2

Bb Clarinet 3

Bass Clarinet

Bb Cl. 1

Bb Cl. 2

Bb Cl. 3

B. Cl.

9

Bb Cl. 1 *mp* *p*

Bb Cl. 2 *p* *mf*

Bb Cl. 3 *mf* *mp > p*

B. Cl.

13

Bb Cl. 1 *mf*

Bb Cl. 2

Bb Cl. 3 *mf*

B. Cl. *mf* *f*

17

Bb Cl. 1 *mf*

Bb Cl. 2 *mf*

Bb Cl. 3 *mf*

B. Cl.

20

Bb Cl. 1 *f* *mp* Sotto Voce

Bb Cl. 2 *f* *mf*

Bb Cl. 3 *f* *mp* Sotto Voce

B. Cl. *mp*