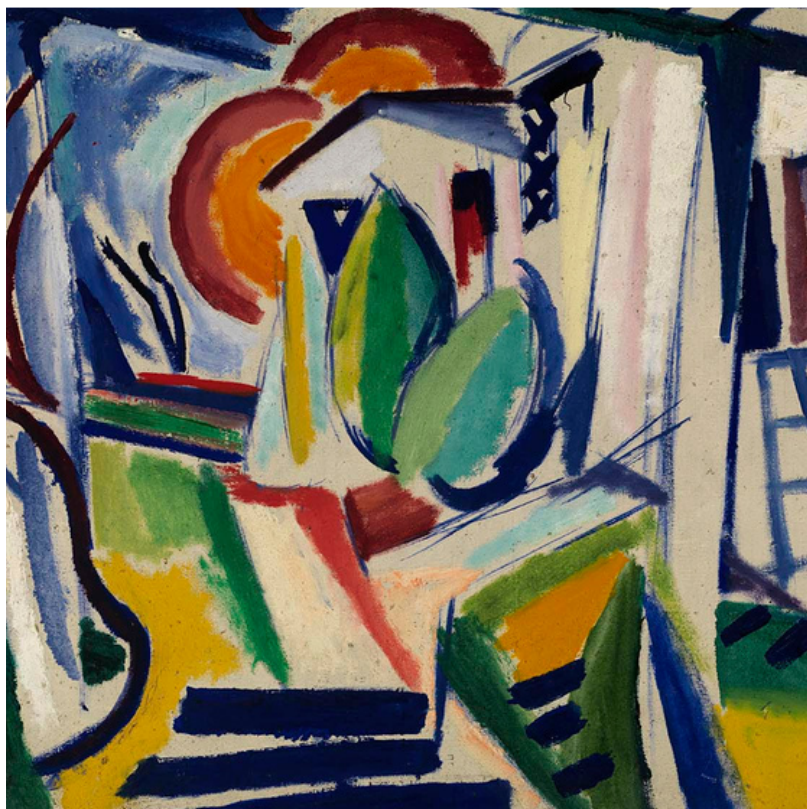


# *Fugue in Blue*

## *Saxophone Quartet*

HUGH LEVEY



**SAX QUARTET**

SCORE & PARTS

# *Fugue in Blue*

HUGH LEVEY

Fugue in Blue started out as a Clarinet Trio called Jazz Fughetta, indicating that it was a simple fugue in a jazz style, but without the formality of a fully worked out fugue. In this rewritten Saxophone Quartet version, the first three voices enter fugally with the second beginning on the dominant and the third back in the tonic. After a contrapuntal interlude based on the opening rhythms, the fourth voice enters on the sub-dominant.

The original work was a student composition exercise, combining a conventional classical form (fugue) with a syncopated jazz style. Many years later it has been reworked in swing style with a more laid back feel and some more inventive harmony and jazz articulation, so is very well suited to the saxophone quartet.

The work is ideal for recital programmes, as a light-hearted opener or relaxed interlude in a more serious concert. It is also suited to younger players who wish to combine the discipline of 'classical' chamber music while learning about jazz articulation, such as falls and short notes at the ends of phrases.

**Duration:** 1' 33"

## **PERFORMANCE NOTES**

The composer has used precise articulation to create the lightness and cool vibe of a jazz piece while adhering to a standard classical form, so it should be played and articulated accurately. The dynamic markings will help to ensure that the most important musical material projects through the texture, but players should also use their musicianship to listen attentively and judge for themselves.

# Fugue in Blue

Hugh Levey

Swing ♩ = 122

The image displays a musical score for the piece "Fugue in Blue" by Hugh Levey. The score is written for four saxophone parts: Soprano Saxophone, Alto Saxophone, Tenor Saxophone, and Baritone Saxophone. The music is in 4/4 time with a key signature of one sharp (F#) and a tempo of 122 beats per minute in a swing feel. The score is divided into two systems. The first system shows the initial four measures, with the Alto Saxophone part starting with a melodic line marked *mf*. The second system continues the piece, with the Soprano Saxophone part starting with a melodic line marked *mf* and the Alto Saxophone part providing harmonic support with a line marked *mp*. A large, semi-transparent watermark reading "PREVIEW ONLY" is overlaid across the center of the page, and a circular logo with a stylized white "W" on a blue background is also present.

8

S. Sax.

A. Sax.

T. Sax.

Bar. Sax.

*mp*

*mf*

PREVIEW ONLY

12

S. Sax.

A. Sax.

T. Sax.

Bar. Sax.

*p*

*mf*

*p*

*mf*

*mp > p*

*mf*

*mf*

PREVIEW ONLY

16

S. Sax. *mf*

A. Sax. *mf*

T. Sax. *mf*

Bar. Sax. *f*

20

S. Sax. *f* *mp* Sotto Voce

A. Sax. *f* *mf*

T. Sax. *f* *mp* Sotto Voce

Bar. Sax. *mp*